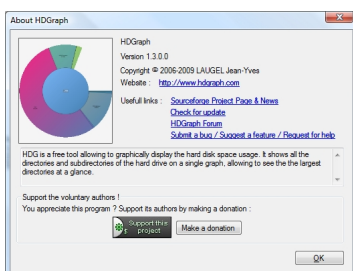
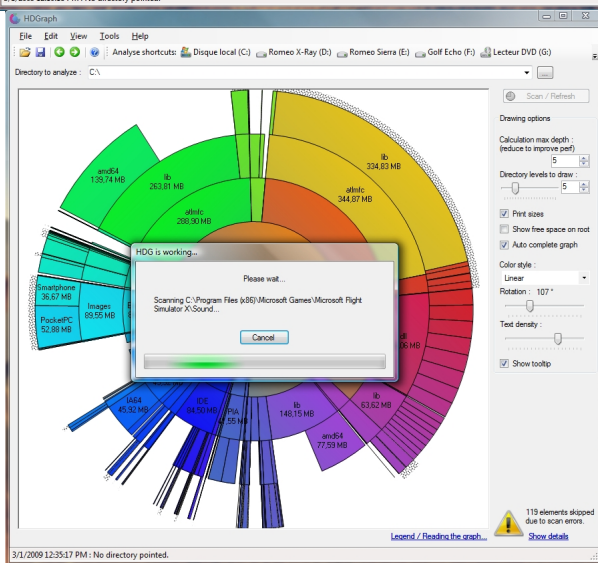
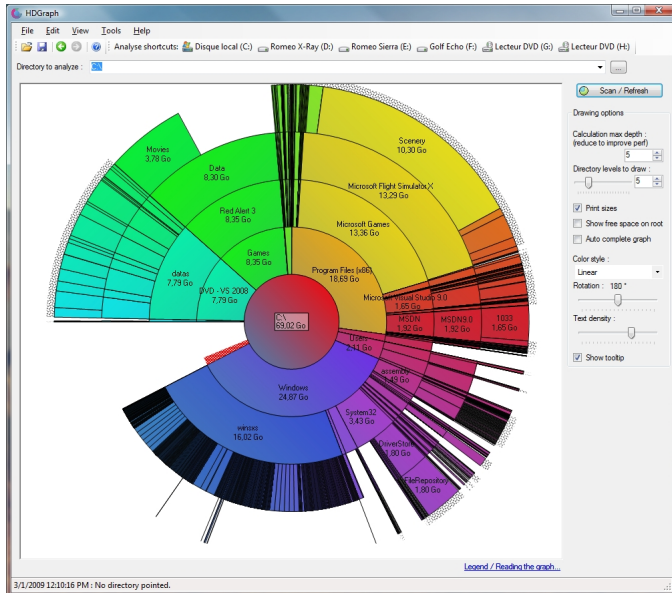


Screenshots

Last Updated Tuesday, 03 March 2009 21:47

Here are some HDGraph screenshots... (version 1.3) :



Screenshots

Last Updated Tuesday, 03 March 2009 21:47

The first screenshot shows a 'scan errors' dialog box with a list of file or directory paths and messages indicating access denials. The paths include various system folders like 'C:\Windows\System32\Task...' and 'C:\Windows\System32\wbem\MOF...'. The messages all state 'Access to the path ... is denied.'

The second screenshot shows the 'Details view for folder "Program Files (x86)'" dialog box. It displays the path 'C:\Program Files (x86)', total size '18.69 Go', and a list of folders with their names, total sizes, and file sizes. The folders listed include Microsoft Games, MSDN, Microsoft Visual Studio 9.0, Microsoft SDKs, Common Files, Microsoft .NET, Windows Mobile 5.0 SDK R2, HomePlayer, Business Objects, Reference Assemblies, adfTV, Microsoft SQL Server Compact Edition, SoundSpectrum, Microsoft SQL Server, Microsoft Web Designer Tools, Mozilla Firefox, and 48 sub folders listed.

The third screenshot shows the main HDGraph interface with a sunburst chart. The chart is a circular diagram representing a directory structure, with segments colored in various shades of green, blue, and orange. A 'Legend / Reading the graph...' link is visible at the bottom. The interface also includes a 'Directory to analyze' field, a 'Scan / Refresh' button, and drawing options like 'Calculation max depth', 'Directory levels to draw', 'Print sizes', 'Show free space on root', 'Auto complete graph', 'Color style', 'Rotation', 'Text density', and 'Show tooltip'.

